

# Manual setup of your wireless loudspeakers/subwoofers with BeoLab Transmitter 1

You must use manual setup, when you want more loudspeakers/subwoofers to be set up to the same sound channel. This guide shows you how to connect more than one loudspeaker/subwoofer to a sound channel step by step. For example, if you want five left loudspeakers and five right loudspeakers in a hallway. You can have up to 11 loudspeakers/subwoofers connected to your BeoLab Transmitter 1.

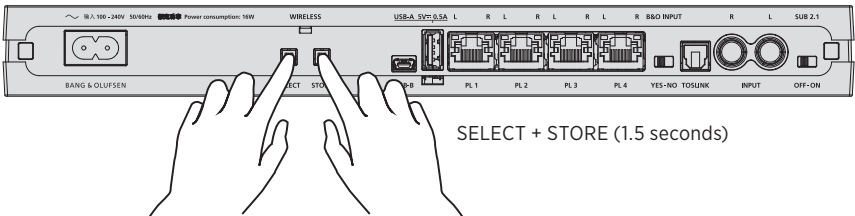
## How to set up more loudspeakers and subwoofers manually

### 1. Make connections

- > Make sure that your BeoLab Transmitter 1 and your wireless loudspeakers/subwoofers are connected to the mains. For more information, see the guide for your BeoLab Transmitter 1 and your wireless loudspeakers/subwoofers.

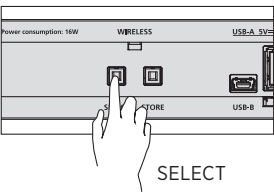
### 2. Reset BeoLab Transmitter 1

- > Press and hold SELECT and STORE simultaneously *for more than 1.5 seconds* to reset your BeoLab Transmitter 1. Your wireless loudspeakers starts flashing green. If your wireless loudspeakers do not flash green, you must also reset your loudspeakers. For more information, see the guide for your wireless loudspeakers.

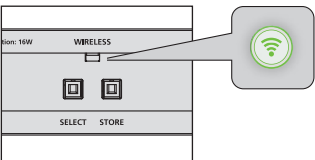


### 3. Search for wireless loudspeakers/subwoofers

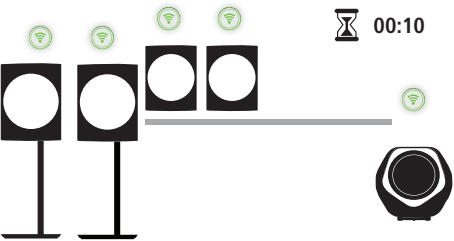
- > Press SELECT *shortly* for the transmitter to search for the wireless loudspeakers/subwoofers.



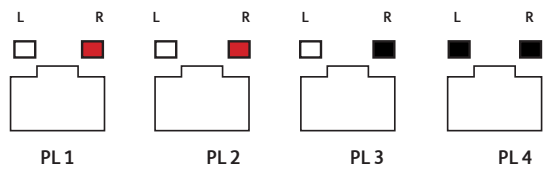
- > The wireless status indicator on the transmitter starts flashing green. It continues to flash green during manual setup.



- > When the loudspeakers/Subwoofers are found, the wireless status indicator on the loudspeakers/subwoofer is solid green for 10 seconds, then it switches off or fades.



- > The PL status indicators lights up for each loudspeaker found (red or white).

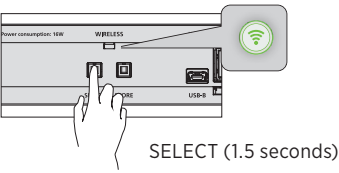


In this example the PL status indicators shows that 5 loudspeakers are found.

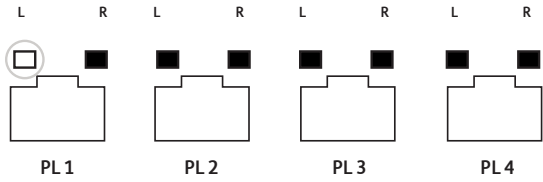
>> continues ...

4. Start manual setup

> Press and hold SELECT until the wireless status indicator becomes solid green to start manual setup of your loudspeakers.

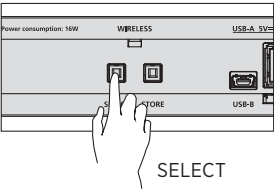


> The leftmost PL status indicator is now flashing and the others are switched off. A sound is produced in one of the loudspeakers.



5. Set up the first left loudspeaker

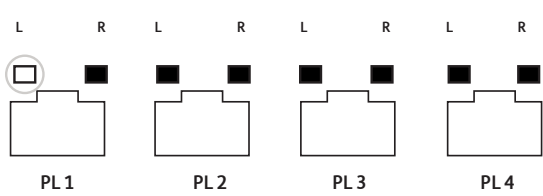
> If the sound does not come from the left loudspeaker, press SELECT once or repeatedly until sound comes from the intended loudspeaker.



> Press and hold STORE until the wireless status indicator becomes solid green to store the loudspeaker to the first sound channel. This also opens up for another loudspeaker to be set up to the same sound channel.



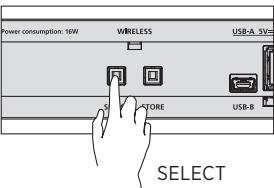
> The leftmost PL status indicator starts flashing. The other PL status indicators are switched off. A sound is produced in one of the loudspeakers.



>> continues ...

6. Set up the next left loudspeaker(s)

> If the sound does not come from the left loudspeaker, press SELECT once or repeatedly until sound comes from the intended loudspeaker.



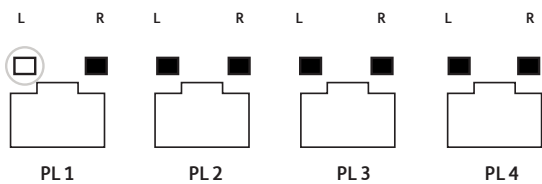
- > Go to step **A** if you want the next loudspeaker to be stored to the same sound channel. Or ...
- > ... to step **B**, if you want to store the next loudspeaker to a new sound channel.

**A.**

> Press and hold **STORE** until the wireless status indicator becomes solid green to store the loudspeaker to the same sound channel and open up for another loudspeaker to be set up to the same sound channel.



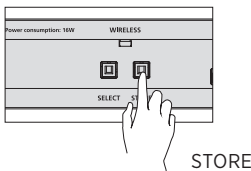
> The leftmost PL status indicator starts flashing. The other PL status indicators are switched off. A sound is produced in one of the loudspeakers.



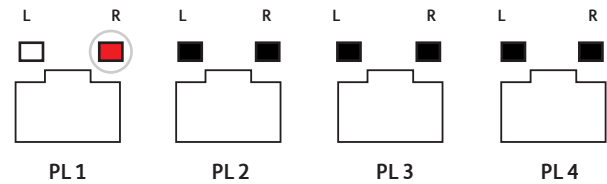
- > Repeat step **A** to store the next loudspeaker to the same sound channel.
- Or ...
- > ... continue to step **B** to store the next loudspeaker to a new sound channel.

**B.**

> Press **STORE** shortly to store the loudspeaker. The next loudspeaker is stored to a new sound channel.



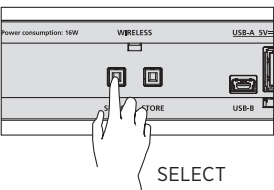
> The leftmost PL status indicator is solid white. The second PL status indicator starts flashing. The other PL status indicators are switched off. A sound is produced in one of the loudspeakers.



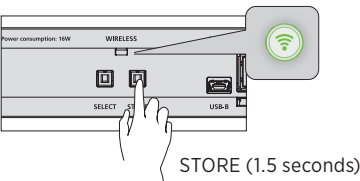
> continue to step 7.

7. Set up the first right loudspeaker

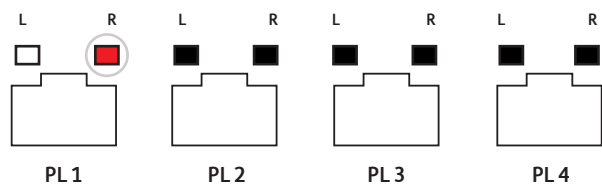
> If the sound does not come from the right loudspeaker, press SELECT once or repeatedly until sound comes from the intended loudspeaker.



> Press and hold **STORE** until the wireless status indicator becomes solid green to store the loudspeaker to the same sound channel and open up for another loudspeaker to be set up to the same sound channel.

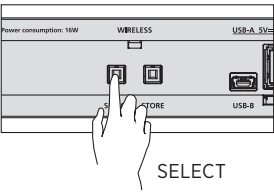


> The first PL status indicator is solid white. The second PL status indicator starts flashing. The other PL status indicators are switched off. A sound is produced in one of the loudspeakers.



8. Set up the next right loudspeaker(s)

> If the sound does not come from the right loudspeaker, press SELECT once or repeatedly until sound comes from the intended loudspeaker.



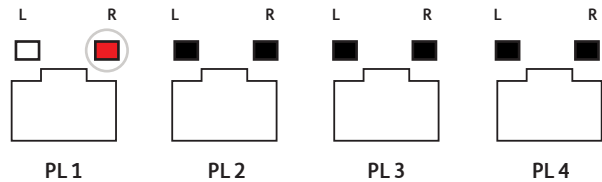
- > Go to step **A** if you want the next loudspeaker to be stored to the same sound channel. Or ...
- > ... to step **B**, if you want to store the next loudspeaker to a new sound channel.

A.

> Press and hold **STORE** until the wireless status indicator becomes solid green to store the loudspeaker to the same sound channel and open up for another loudspeaker to be set up to the same sound channel.



> The first PL status indicator is solid white. The second PL status indicator starts flashing. The other PL status indicators are switched off. A sound is produced in one of the loudspeakers.

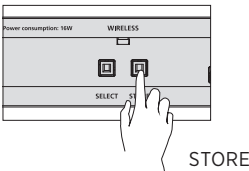


- > Repeat step **A** to store the next loudspeaker to the same sound channel. Or ...
- > ... continue to step **B** to store the next loudspeaker to a new sound channel.

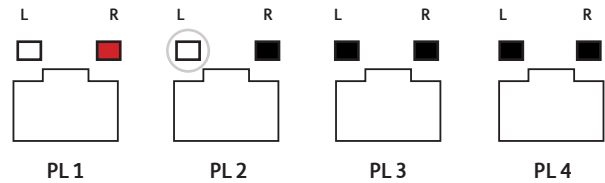
>> continues ...

B.

> Press **STORE** shortly to store the loudspeaker. The next loudspeaker is stored to a new sound channel.



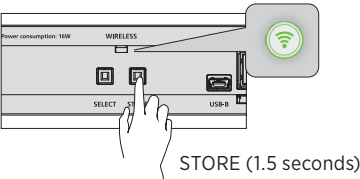
> The first two PL status indicators are solid - red or white. The third PL status indicator starts flashing. The other PL status indicators are switched off. A sound is produced in one of the subwoofers.



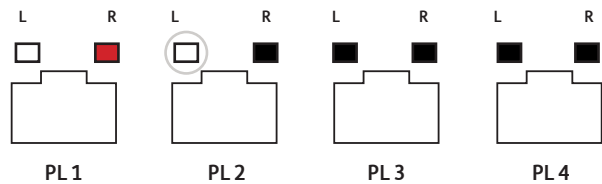
> continue to step 9.

9. Set up the subwoofer(s)

- > Set the subwoofer switch (SUB – 2.1 (OFF – ON)) correctly, depending on your setup. For more information, see the guide for your BeoLab Transmitter 1.
- > Press and hold STORE until the wireless status indicator becomes solid green to store the subwoofer to the same sound channel and open up for another subwoofer to be set up to the same sound channel.



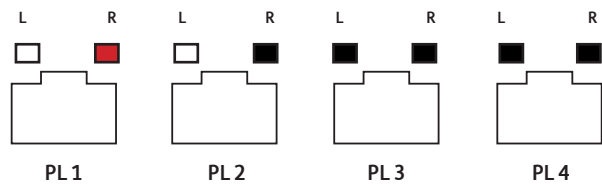
- > The first two PL status indicators are solid - red or white. The third PL status indicator starts flashing. The other PL status indicators are switched off.



- > If you have more than one subwoofer, repeat step 9 to store the next subwoofer to the same sound channel.

10. Complete manual setup

- > When you have made a wireless connection to all speakers/subwoofers, the used PL status indicators are solid red or white for 10 seconds, then switches off.



In this example three PL status indicators are used.

- > Connect your music system to BeoLab Transmitter 1. For more information, see the guide for your music system and your BeoLab Transmitter 1.

Finished ✓